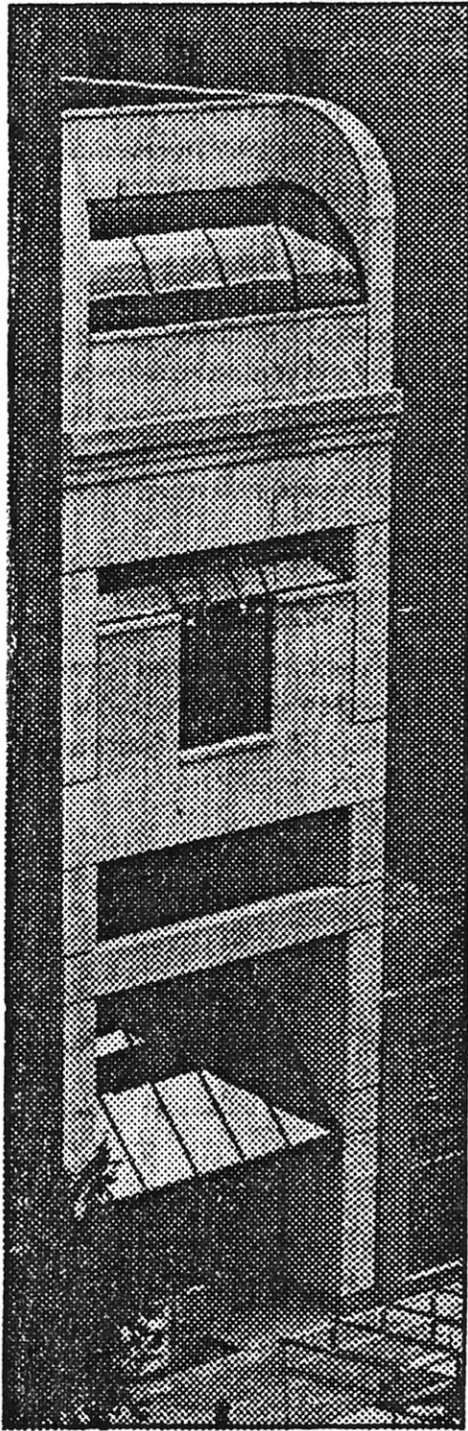


# The New York Times

Sunday, Aug. 22, 1982



The New York Times/Gary Guisinger

969 Madison Avenue.

## L-Shaped Site

# Filling In The Gaps

The mixed-use art gallery and condominium-apartment building nearing completion just off the southeast corner of Madison Avenue and 76th Street is called "infill" architecture by its designers, Stephen B. Jacobs & Associates.

Shaped like an L because it is being built around the east and south sides of an older building that occupies the corner, the new Gallery Apartments has a 60-foot frontage at 32 East 76th Street and a 20-foot frontage around the corner at 969 Madison Avenue. By "infilling" both legs of the plot with a single structure, the design makes them worth more together than if they had been developed singly.

The limestone-and-brick building — 15 stories high on 76th Street and four stories high on Madison Avenue — will have four floors of commercial art galleries and 11 residential floors containing 35 simplex and duplex apartments, some with double-height living rooms.

The building is being developed for Arminjo Realty Corporation of Great Neck, L.I., and will be ready for occupancy this fall.